



norecopa

norecopa.no

# Norecopa: a toolbox of online 3R resources

Adrian Smith, Bente Bergersen, Siri Knudsen, Anton Krag & Børge N. Fredriksen

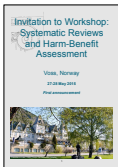
Norecopa, c/o Norwegian Veterinary Institute, P.O. Box 750 Sentrum, 0106 Oslo, Norway



- 7,600 searchable webpages of 3R resources
- PREPARE guidelines for planning experiments
- Newsletters about new resources
- An international Meetings Calendar
- Meetings on 3R topics
- A 3R Prize of NOK 30,000
- Statements on hot topics

Norecopa provides scientists and animal facilities with resources for both better science and improved animal welfare

## Examples of Norecopa's initiatives:



Workshop on literature searches, systematic literature reviews and harm-benefit assessment



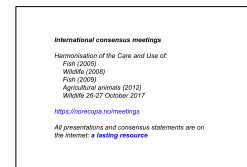
Free web-based databases with 3R-resources



Workshop on experimental design and statistical analysis



Guidelines for animal experiments



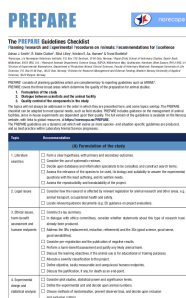
International consensus meetings involving all stakeholders in animal research



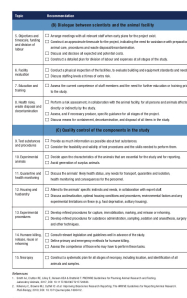
Organisations of relevance to animal research

- Organisations within Laboratory Animal Science
- AAALAC International (Association for Assessment and Accreditation of Laboratory Animal Care International)
- AAALAS (American Association for Laboratory Animal Science)
- ACLAM (American College of Laboratory Animal Medicine)
- Animatch (an online sharing platform for the exchange of organs and tissues)
- ASIAL (Asociatia Româna pentru Situația Animalelor de Laborator, Romanian Laboratory Animal Science Association)
- ASLAP (American Society of Laboratory Animal Practitioners)

6,000 webpages  
80,000 links  
22,000 unique links  
<3.5% dead links



norecopa.no/prepare/prepare-checklist



In addition to the checklist, much more information is available on:

norecopa.no/PREPARE



- PREPARE Checklist
- 1-Literature searches
- 2-Legal issues
- 3-Ethical issues, Harm-Benefit Assessment and humane endpoints
- 4-Experimental design and statistical analysis
- 5-Objectives and timescale, funding and division of labour
- 6-Facility evaluation
- 7-Education and training
- 8-Health risks, waste disposal and decontamination
- 9-Test substances and procedures
- 10-Experimental animals
- 11-Quarantine and health monitoring
- 12-Housing and husbandry
- 13-Experimental procedures
- 14-Humane killing, release, re-use or re-homing
- 15-Necropsy
- Comparison with ARRIVE

Please contact Adrian Smith ([adrian.smith@norecopa.no](mailto:adrian.smith@norecopa.no)) for more information

We gratefully acknowledge financial support from the Norwegian Parliament, the Nordic Society against Painful Experiments (NSMSD), Novo Nordisk, the Norwegian Society for Protection of Animals, the Norwegian Animal Protection Alliance, the Research Council of Norway, Laboratory Animals Ltd., the Scottish Accreditation Board, the Stiansen Foundation, the Universities Federation of Animal Welfare (UFAW) and the US Department of Agriculture (USDA)

Graphics: colourbox.com